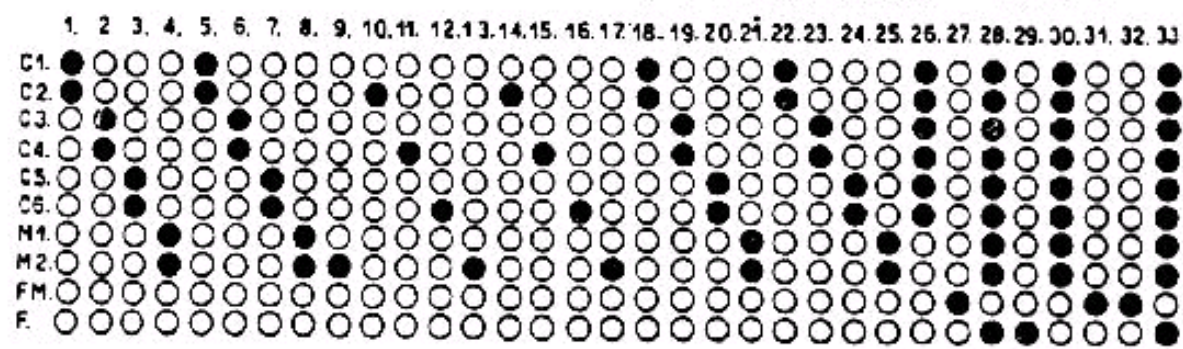


Nomin.	Valore	Toller %	Tensione di prova in c.c.	Tipo	Nomin.	Valore	Toller %	Watt
C1	40	pl.	1000 V	ag.	R 1	0.1 MΩ	10	1/4
C2	3000	"	750	ceram.	R 2	1000 Ω	"	"
C3	3000	"	"	"	R 3	1 MΩ	"	"
C4	10	"	"	"	R 4	10 KΩ	"	"
C5	10.000	"	"	"	R 5	22 KΩ	"	"
C6	40	"	"	"	R 6	80 KΩ	"	"
C7	3	"	1500	"	R 7	0.47 MΩ	"	"
C8	25	"	750	"	R 8	0.1 MΩ	"	"
C9	15	"	1000	ag.	R 9	0.1 MΩ	"	"
C10	1500	"	750	ceram.	R 10	1000 Ω	"	"
C11	25	"	1000	"	R 11	22 KΩ	"	"
C12	25	"	"	ag.	R 12	22 KΩ	"	"
C13	10.000	"	750	ceram.	R 13	500 Ω	"	"
C14	25	"	1000	"	R 14	1500 Ω	"	"
C15	25	"	"	ag.	R 15	10 KΩ	"	"
C16	40	"	"	"	R 16	10 KΩ	"	"
C17	3000	"	750	ceram.	R 17	1 MΩ	"	"
C18	3000	"	"	"	R 18	68 KΩ	"	"
C19	10	"	1000	ag.	R 19	22 KΩ	"	"
C20	40	"	"	"	R 20	27 KΩ	"	"
C21	340	"	"	"	R 21	1 MΩ	"	"
C22	340	"	"	"	R 22	3300 Ω	"	"
C23	6	uf.	100 Vt	Elett.	R 23	2.2 MΩ	"	"
C24	2000	of	1500 V	carta	R 24	2.2 MΩ	"	"
C25	340	"	1000	ag.	R 25	10 KΩ	"	"
C26	3000	"	1500	carta	R 26	0.1 MΩ	"	"
C27	1000	"	"	"	R 27	12.5 Ω	"	"
C28	25.000	"	"	"	R 28	0.22 MΩ	"	"
C29	1000	"	"	"	R 29	3300 Ω	"	"
C30	40	"	1000	ag.	R 30	0.22 MΩ	"	"
C31	15	"	"	"	R 31	0.1 MΩ	"	"
C32	200	"	"	"	R 32	0.1 MΩ	"	"
C33	30	"	"	"	R 33	2.2 MΩ	"	"
C34	40	"	"	"	R 34	1 MΩ	"	"
C35	75	"	"	"	R 35	22 KΩ	"	"
C36	25.000	"	1500	carta	R 36	0.1 MΩ	"	"
C37	3000	"	750	ceram.	R 37	47 Ω	"	"
C38	30	"	1500	"	R 38	10 KΩ	"	"
C39	30	"	1000	ag.	R 39	0.1 MΩ	"	"
C40	40	"	"	"	R 40	47 Ω	"	"
C41	60	"	"	"	R 41	47 KΩ	"	"
C42	340	"	"	"	R 42	1 MΩ	"	"
C43	200	"	"	"	R 43	1 MΩ	"	"
C44	32	uf.	350 Vt	Elett.				
C45	200	pl.	1000 V	ag.				
C46	200	"	"	"				
C47	10.000	"	750	carta				
C48	150	"	1000	ag.				
C49	10.000	"	1500	carta				
C50	25	"	25	Elett.				
C51	10.000	pl.	750 V	ceram.				
C52	200	"	1000	ag.				
C53	200	"	"	"				
C54	10.000	"	1500	carta				
C55	500	"	1000	ag.				
C56	100.000	"	1500	carta				
C57	8	uf.	350 Vt	Elett.				
C58	100.000	pl.	1500 V	carta				
C59	200	"	1000	ag.				
C60	10.000	"	1500	carta				
C61	25	uf.	25 Vt	Elett.				
C62	100.000	pl.	1500 V	carta				
C63	2000	"	3000	"				
C64	15.000	"	1500	"				
C65	500.000	"	1000	carta				
C66	32	uf.	350 Vt	Elett.				
C67	32	"	"	"				
C68	2000	pl.	3000 V	carta				
C69	5000	"	"	"				
C70	2000	"	"	"				

RV	0.5 MΩ lag.	R 5459/3
RT	0.25 MΩ lag con interr.	R 5459/2
L1	Bobina aereo FM	R 7284/1
L2	» interval. FM	R 7284/2
L3	» oscillator. FM	R 7284/3
L4	» di placca FM	R 7258
L5	MF FM 10.7 Mz	R 7235
L6	» » » »	R 7236
L7	Discriminatore	R 7234
L8	Bobina aereo 19-75 m	R 7181/2
L9	» » 31-41 m.	R 7182
L10	» » 50-80 m.	R 7182
L11	» » OM	R 7183
L12	» filtro aereo OM	R 7280
L13	» oscillator 19-25	R 7281
L14	» » 31-41	R 7186/1
L15	» » 50-80	R 7283
L16	» » OM	R 7216
L17-18	MF. AM. Tipo E1	R 5461
L19-20	Bobina filtro rete	R 7130



FIMI S.A. - PHONOLA - Mod. 905. Tabella dei valori dei componenti e schema commutazione.